

Human Anatomy Model Heart

Modelo de anatomía humana: Corazón • Modèle anatomique
humain : Cœur • Menschliches Anatomiemodell: Herz

Activity Guide

Guía de actividades • Guide d'activités • Spielvorschläge

This set of 29 pieces connects to form a human heart that displays the organ's major parts. Some pieces are hinged to exhibit the heart's four chambers. The model features the following sections of the heart: superior vena cava, inferior vena cava, right atrium, tricuspid valve, right ventricle, pulmonary artery, left atrium, mitral valve, left ventricle, and aorta.



ES

Este set contiene veintinueve piezas que conectan entre sí para formar un corazón humano que contiene las partes principales de este órgano. Algunas de las piezas están articuladas con el fin de mostrar las cuatro cavidades cardíacas. El modelo cuenta con las siguientes partes del corazón: vena cava superior, vena cava inferior, aurícula derecha, válvula tricúspide, ventrículo derecho, arteria pulmonar, aurícula izquierda, válvula mitral, ventrículo izquierdo y aorta.

FR

Cet ensemble de 29 pièces s'assemble pour former un cœur humain indiquant les principales parties de cet organe. Certaines pièces sont articulées pour montrer les quatre cavités du cœur. Le modèle comprend les sections suivantes du cœur : la veine cave supérieure, la veine cave inférieure, l'atrium droit, la valve tricuspide, le ventricule droit, l'artère pulmonaire, l'atrium gauche, la valve mitrale, le ventricule gauche et l'aorte.

DE

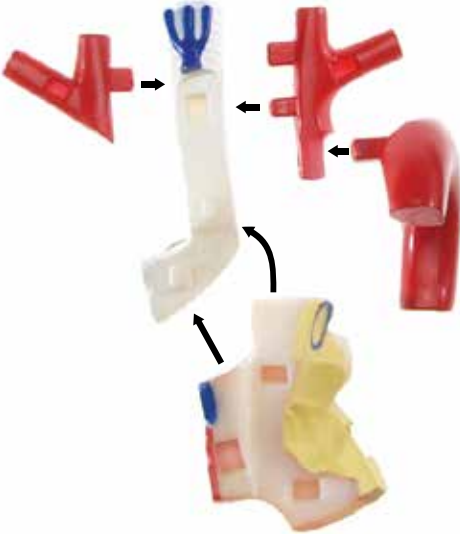
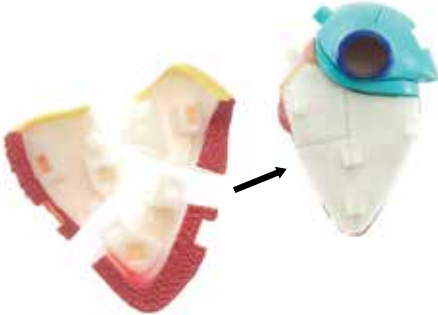
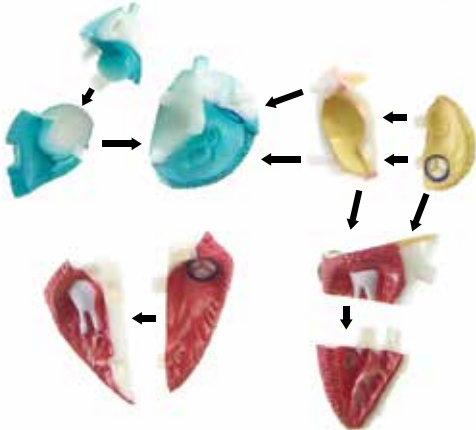
Das 29-teilige Set bildet zusammengesetzt ein menschliches Herz, an dem die wichtigsten Bestandteile des Organs zu erkennen sind. Die vier Herzkammern sind zur anschaulichen Darstellung aufklappbar. Das Modell stellt die folgenden Abschnitte des Herzens dar: Vena Cava superior, Vena Cava inferior, rechter Vorhof, Trikuspidalklappe, rechte Herzkammer, Lungenarterie, linker Vorhof, Mitralklappe, linke Herzkammer und Aorta.

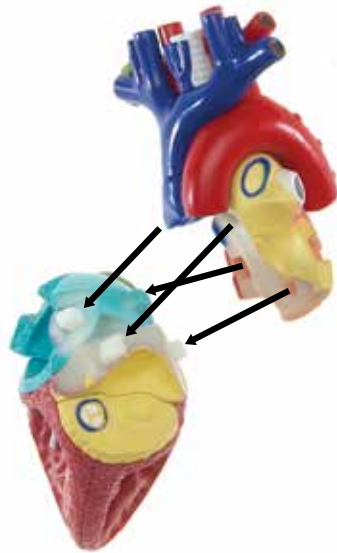
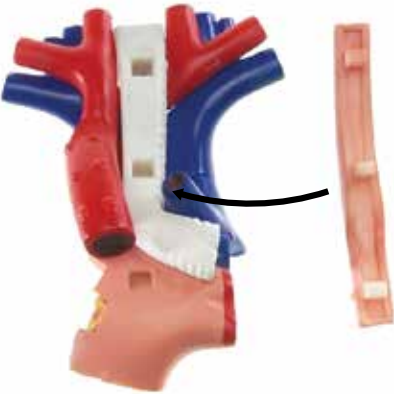
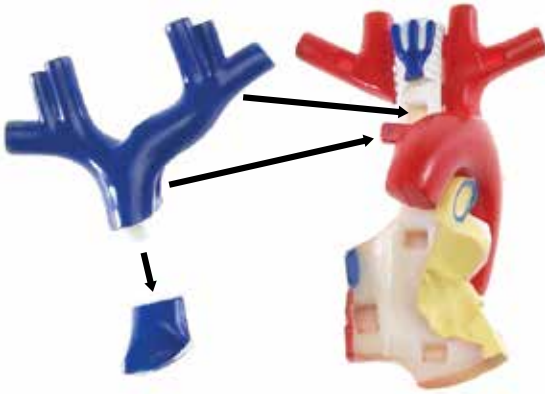


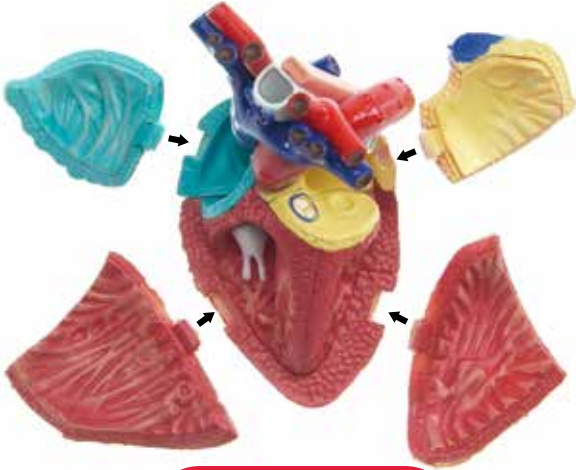
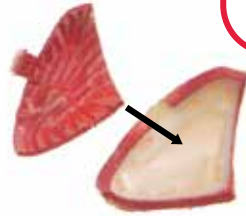
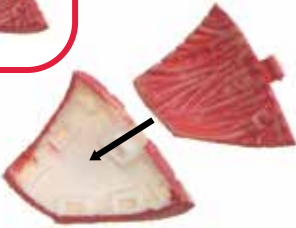
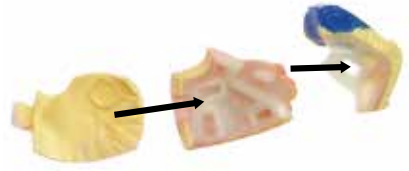
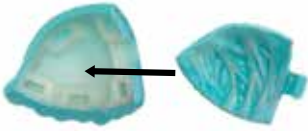
WARNING:
CHOKING HAZARD - Small parts.
Not for children under 3 years.

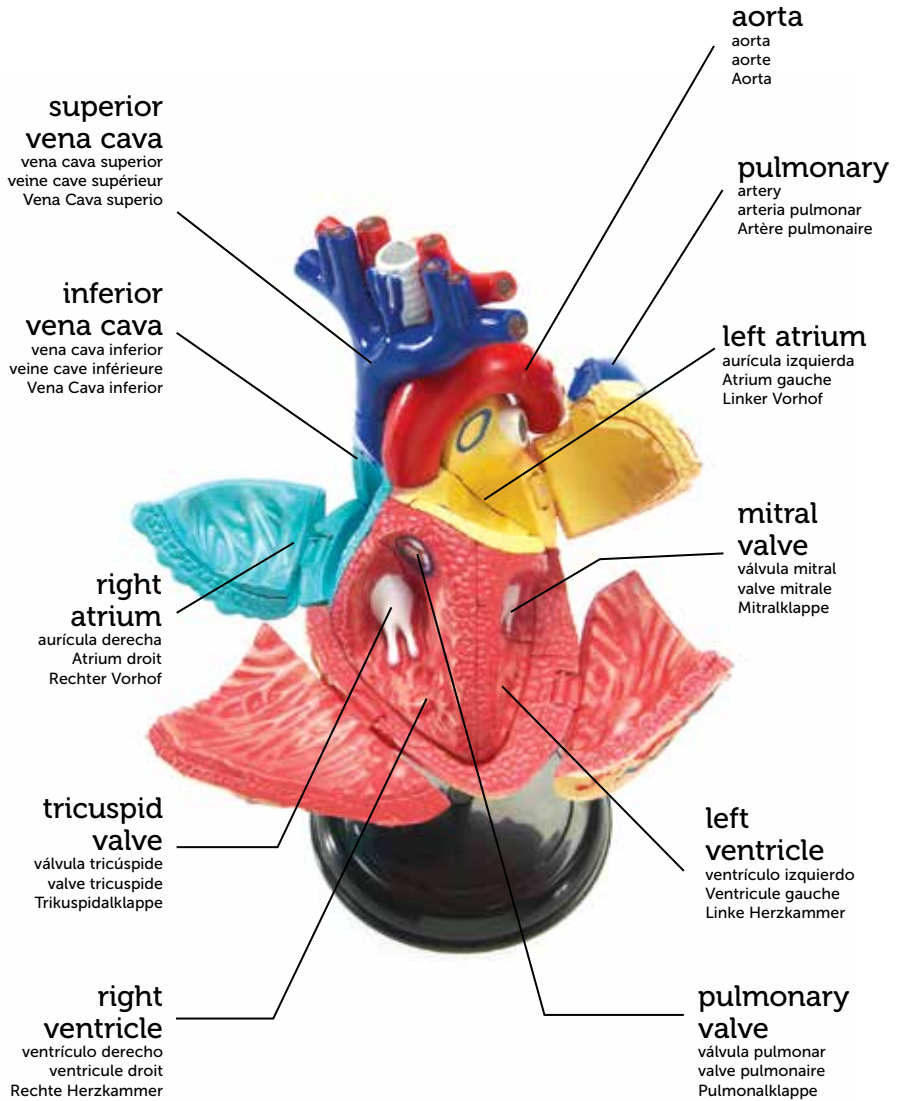
Assembly

Montaje • Montage • Zusammenbau









superior vena cava large vein that carries oxygen-poor blood from the upper body into the right atrium

inferior vena cava large vein that carries oxygen-poor blood from the lower body into the right atrium

right atrium upper-right chamber of the heart that directs oxygen-poor blood from the superior and inferior vena cava to the right ventricle

tricuspid valve separates the right atrium and right ventricle, preventing blood from flowing in the wrong direction

right ventricle lower-right chamber of the heart that collects oxygen-poor blood from the right atrium, pumping it through the pulmonary valve into the pulmonary artery

pulmonary valve located between the right ventricle and pulmonary artery that prevents blood from flowing in the wrong direction

pulmonary artery the only artery that carries oxygen-poor blood from the heart directly to the lungs

left atrium upper-left chamber of the heart that pumps oxygen-rich blood from the lungs into the left ventricle

mitral valve separates the left atrium and left ventricle, preventing blood from flowing in the wrong direction

left ventricle lower-left chamber of the heart that pumps blood from the left atrium through the aorta to the entire body, except for the lungs

aorta largest artery in the body; carries oxygen-rich blood from the left ventricle to the rest of the body, except for the lungs